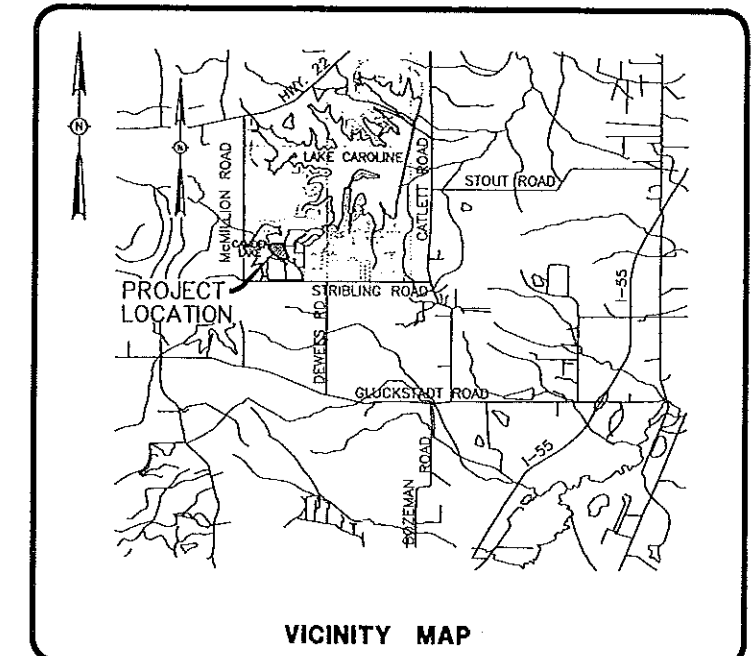
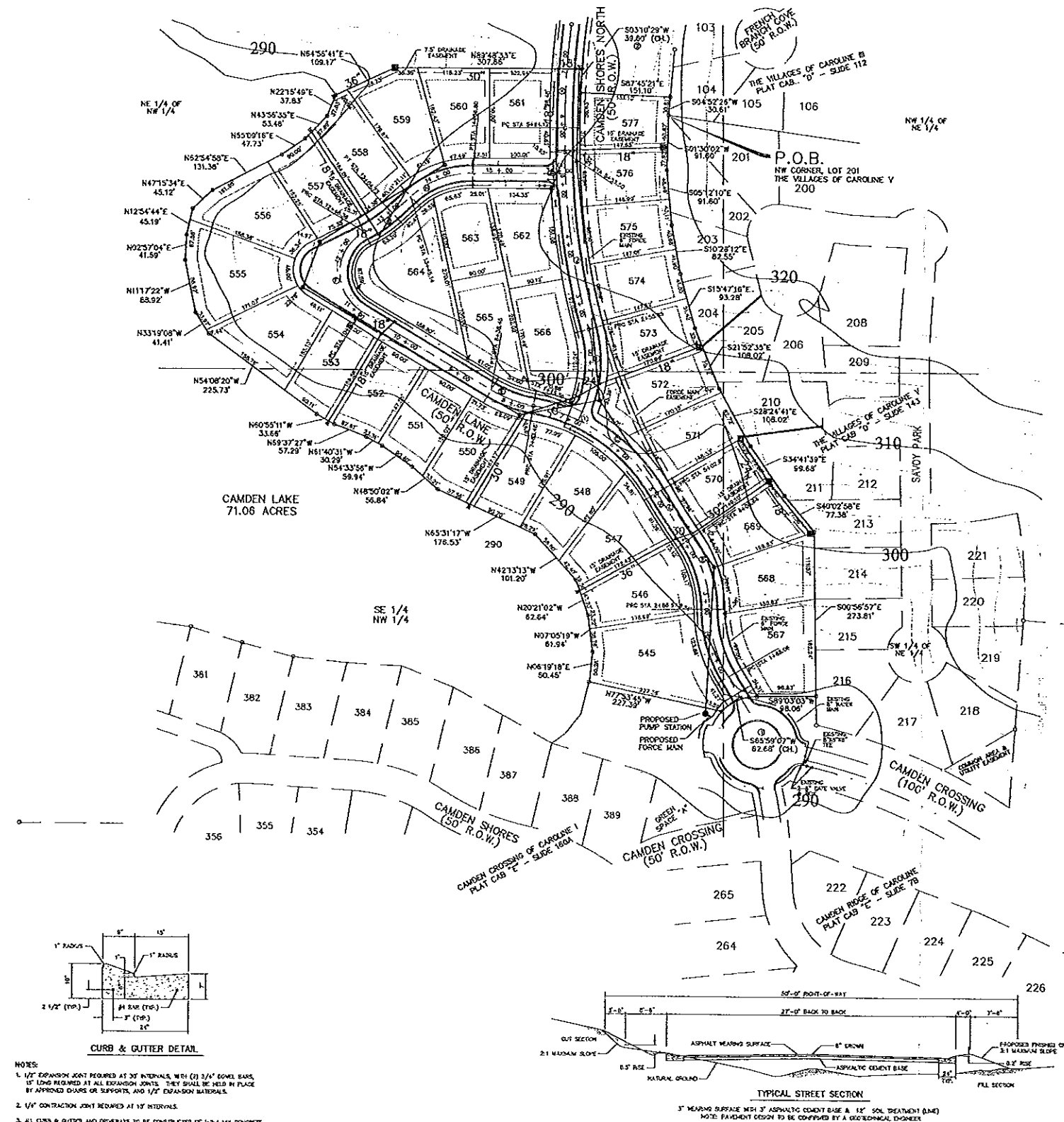


MEMO

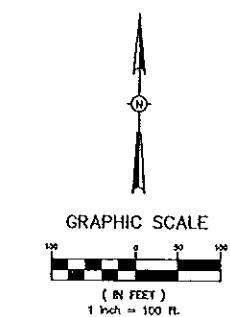
To: Madison County Board of Supervisors
From: Brad Sellers
Subject: Preliminary Plats - Camden Crossing of Caroline, IV; Hatheway Lake, part 5
Date: July 9, 2013

The preliminary plats of Camden Crossing of Caroline IV and Hatheway Lake part 5 meet all requirements of Planning and Zoning. Reviewed and approved by the County Engineer.



UTILITY LEGEND

	FIRE HYDRANT		WATER MAIN
	MANHOLE		8\" SANITARY SEWER
	15\" STORM DRAIN		STORM DRAIN
	CURB INLET		WATER VALVE
	UTILITY EASEMENT		



CENTERLINE INTERSECTIONS

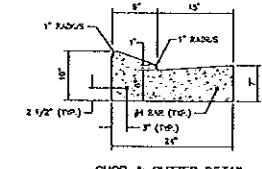
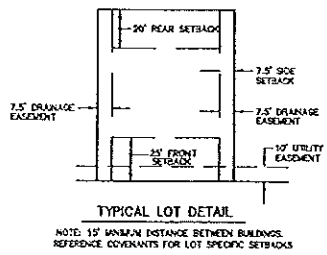
- STA. 81+88.33 CAMDEN LANE = STA. 140+00.00 CAMDEN SHORES NORTH
- STA. 11+08.88 CAMDEN LANE = STA. 311+25.00 CAMDEN SHORES NORTH

CENTERLINE CURVE DATA

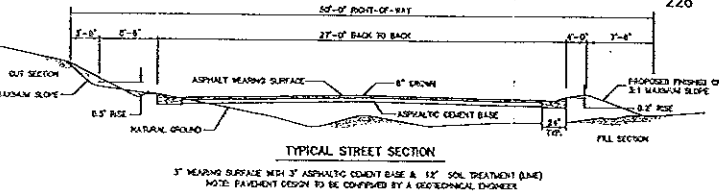
① Δ = 107°14'1\"/>	② Δ = 34°30'20\"/>	③ Δ = 94°45'1\"/>
D = 25.8474'	D = 28.8479'	D = 3.0294'
R = 122.00'	R = 200.00'	R = 112.50'
L = 182.57'	L = 112.00'	L = 143.57'
④ Δ = 42°45'1\"/>	⑤ Δ = 33°52'1\"/>	⑥ Δ = 122°17'2\"/>
D = 12.0268'	D = 25.8479'	D = 25.36127'
R = 300.00'	R = 200.00'	R = 25.00'
L = 203.37'	L = 74.87'	L = 142.00'
⑦ Δ = 110°30'1\"/>	⑧ Δ = 42°38'1\"/>	⑨ Δ = 43°15'4\"/>
D = 24.8479'	D = 24.8479'	D = 24.8479'
R = 200.00'	R = 200.00'	R = 24.8479'
L = 241.07'	L = 112.00'	L = 142.00'

BOUNDARY CURVE DATA

① Δ = 173°09'02\"/>	② Δ = 32°43'41\"/>
D = 71.61973'	D = 4.72250'
R = 83.00'	R = 12.525'
L = 241.07'	L = 69.00'



- NOTES:**
- 1/2\"/>



MICHAEL E. LANG
REGISTERED PROFESSIONAL
ENGINEER AND
PE - 10618
LS - 2526
STATE OF MISSISSIPPI
11/18/13

DEVELOPER
CAROLINE LLC
654 BELLEVUE DRIVE,
MADISON, MISSISSIPPI 39110

- NOTES:**
1. THIS SUBDIVISION LIES WITHIN THE LIMITS ESTABLISHED FOR ZONE "X" (NO SHADING) ACCORDING TO ZONING MAP NUMBER 280800393 F, EFFECTIVE MARCH 17, 2010.
 2. DIMENSIONS ALONG CURVES ARE CHORD DISTANCES.
 3. SURVEY CLASSIFICATION "B".
 4. REFERENCE MERIDIAN: WEST LINE OF THE VILLAGES OF CAROLINE V, PLAT CABINET D - SLIDE 143.
 5. AREA = 14.505 ACRES, MORE OR LESS.
 6. CONCRETE MONUMENTS WILL BE PLACED AT ALL CORNERS OF THE SUBDIVISION POST-CONSTRUCTION.

H D LANG AND ASSOCIATES, INC.
POST OFFICE BOX 16085 JACKSON, MISSISSIPPI 39238
601-362-4886

PROJECT
PRELIMINARY PLAT
OF
CAMDEN CROSSING OF CAROLINE IV

LOCATION
SITUATED IN THE
WEST 1/2 OF THE NORTHEAST 1/4 AND THE
EAST 1/2 OF THE NORTHWEST 1/4 OF
SECTION 14, TOWNSHIP 8 NORTH - RANGE 1 EAST
MADISON COUNTY, MISSISSIPPI

DATE	REVISION	BY	DRAWN BY: D.L.M.
			DATE: 11-14-13
			SCALE: 1" = 100'
			BOOK: PAGE:
			PROJECT NO.: CO-199